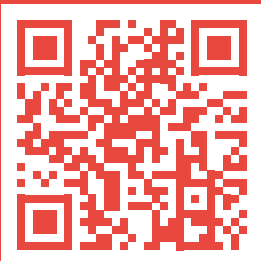


# food waste

# recycling

# collected weekly



**VEOLIA**



**Stafford**  
BOROUGH COUNCIL

[www.staffordbc.gov.uk/food-waste](http://www.staffordbc.gov.uk/food-waste)

# Food waste recycling

From 13th April 2026, Stafford Borough Council will start a food waste recycling collection to meet the Government's new national recycling requirements.

We will provide you with a small kitchen caddy and a roll of liners\* as well as a larger kerbside caddy with a lockable lid to keep out pests.

Food waste will be collected weekly on the same day as we collect your other waste and recycling.

## How to use your caddies

We will collect your food waste weekly on your usual collection day but using a separate vehicle. Please leave your caddy out until it has been emptied.

A yellow tag lets you know that you are near the end of the roll of liners. Attach the tag to the handle of the kerbside caddy and we will leave you a new roll of liners.



Use the liners\* in the small kitchen caddy to collect your waste.

When it's full, tie a knot in the liner and transfer it to the large kerbside caddy.

Put the large kerbside caddy out with your other bins on collection day.

\* liners are provided but are optional to use

## ✓ What can go in your caddy?

Uneaten food and plate scrapings, cooked and raw food scraps and out of date or mouldy food can all go in.



Raw and cooked meat or fish, including bones



Raw and cooked fruit and vegetables and their peelings



Fast food, takeaway and ready meal leftovers



Tea leaves and bags and coffee grounds



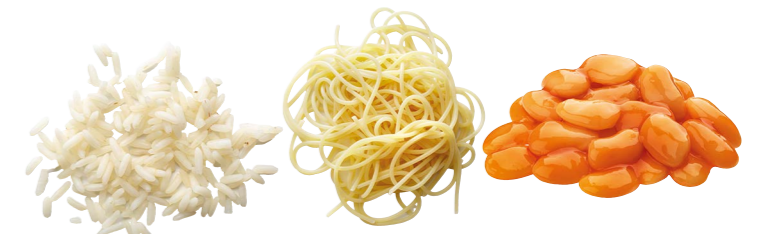
Dairy products like cheese, eggs and egg shells



Baked goods like bread, cake, pastries, pies and biscuits



Pet food



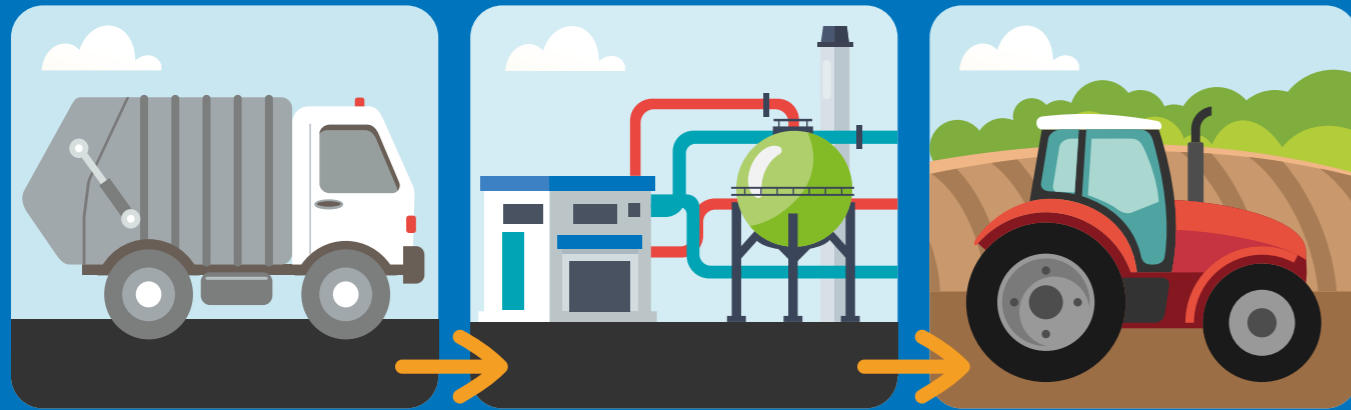
Rice, pasta, noodles, beans and pulses

## ✗ What not to put in?

Please do not put any kind of **PACKAGING**, **LIQUIDS** such as milk or oil or any **NON-FOOD PRODUCTS** in the caddy.

# Where does the food go?

Your food waste will be taken to a local anaerobic digestion plant. The process produces bio gas which is used to generate heat and electricity for the National Grid and also a bio-fertiliser which is used on local farms.



# The power of food recycling



Separating your food waste can change your shopping and eating habits and result in cost savings.



One recycled banana peel can generate enough electricity to fully charge your smartphone twice.



Recycling six tea bags generates enough energy to boil a kettle to make another cuppa!



[www.staffordbc.gov.uk/food-waste](http://www.staffordbc.gov.uk/food-waste)