

Council Tax › 2025 - 2026

The average household* will pay around 10p more a week to the Borough Council in tax for 2025/26. This small increase will help protect services to you.



£178.75

Stafford
Borough Council

£1,621.71

Staffordshire
County Council

£287.57

Staffordshire
Commissioner
(Police and Crime)

£91.77

Staffordshire
Commissioner
(Fire and Rescue)

**But what does Stafford Borough Council
do for my £3.44* a week?**

** Figure based on the average Band D charge.*

So what did we do in 2024?

Along with the many key services we deliver across our borough, there is so much more we have been doing - and will be doing in 2025.

Work has already started on preparing two main buildings in the heart of Stafford town centre as part of our ambitious plans to transform the area.

Demolition has begun on the former Co-op building which has stood empty for more than a decade. Similar work is taking place at the Guildhall Shopping Centre which has been struggling for some time with very few retailers trading inside.

We purchased both buildings, from money we successfully secured from the Government, to speed up the pace of regeneration and do the groundwork to make the projects more attractive to investors and developers. The aim is to introduce more town centre living alongside a commercial offer that can breathe new life into the High Street while retaining the historic frontages of both.

'Project Stafford' includes the work we have done this year to enhance the entrance and approach to Stafford Railway Station - giving visitors by train a great first impression of the county town.

Earlier this year we were able to announce Government confirmation of nearly £20m to help the Stafford Station Gateway - a huge scheme with proposals for a hotel, multi-storey car park, homes and leisure facilities on mostly brownfield and underutilised land behind the railway.

We've supported small and medium sized businesses in the borough in the last 12 months with hundreds of thousands of pounds in initiatives to help them start, grow and thrive. And there is more to come in 2025.

Here are just some of the services we provide for that £3.44 a week*

Aidan Godfrey, Leader,
Stafford Borough Council

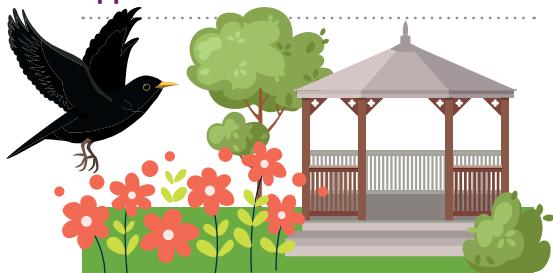


Recycling and Waste Services

More than **90,000 bins** are emptied each week. **We recycled nearly 47%** of the waste collected from **63,500 households**.

Planning and Building Control

We manage development in the borough and ensure that buildings are safely constructed. **1,250 planning applications** were received in 2024.



Parks and Open Spaces

We look after nearly **1,000 acres of parks and open spaces** - including six which have won national awards.

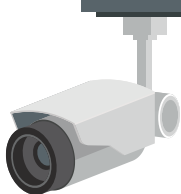
Street Cleaning

We clean more than **5,000 miles** of roads and pavements each year and empty over **1,550 litter bins**. Last year we **fined or prosecuted 24 people for environmental crimes** such as fly tipping, abandoning vehicles or dog fouling offences.



Community Safety

The council monitors more than **140 CCTV cameras** and partner the police and other agencies in initiatives to reduce crime and make people feel safer.

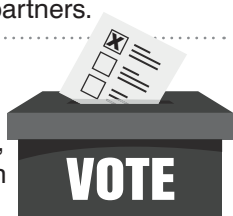


Housing

Our work has helped **reduce the number** of people sleeping rough. **We prevented around 1,160 people becoming homeless** over the last year working with partners.

Elections

We run the polls for national, county, borough and parish elections and keep the local electoral register up to date.



Bereavement Services

Holds top awards for the crematorium in Tixall Road, Stafford and cemeteries in Eccleshall Road and Stone.

Housing Benefit and Council Tax Support

We make sure people get the help they are entitled to as soon as possible and regularly review claims to identify any changes in circumstances. **Around 7,200 households received our help towards their rent or council tax.**

Contact Us

info@staffordbc.gov.uk

www.staffordbc.gov.uk

01785 619 000

nextdoor



Discounts and Reductions

Local Council Tax Banded Discount Scheme

If you are on a low income and need help paying your Council Tax you may be entitled to a reduction in the amount you have to pay.

For people of pensionable age, we operate a national rebate scheme. For working age people we operate a local Banded Discount Scheme whereby a percentage discount, based on the household income, is deducted from the council tax bill. The Banded Scheme provides additional help for families with children, people in low paid jobs and for anyone who is disabled.

Discounts and Premiums

Some unoccupied and unfurnished properties attract a discount for limited periods. Properties that have been empty for more than one year pay additional premiums. From 1 April 2025, a premium will be payable for unoccupied and furnished properties (second homes). Please see our website for details of exceptions which may apply to these premiums or contact us for further details.

Other discounts depend on the number of adults in your house and their circumstances. If you are the only adult resident in your property, you can apply for a 25% discount. Some people are not counted when looking at the number of adults in a property. These people include students and young people for whom child benefit is paid, people receiving or providing personal care, severely mentally impaired people and prisoners. The Council will consider applications for discretionary discounts based on individual circumstances.

Exempt Properties

Some properties are exempt from Council Tax such as those occupied only by students or unoccupied properties which were previously occupied by persons who are now in residential care.

Reduction for People with Disabilities

If you, or someone who lives with you, needs a room, an extra bathroom or kitchen, or extra space in your property to meet special needs arising from a disability, your bill may be reduced.

Council Tax Valuation Bands

The Valuation Office Agency, part of HM Revenue and Customs (not your local Council) has put every property into one of eight valuation bands. A full list of valuation bands is available on its website at www.voa.gov.uk

Band	Range of Values (based on 1991 prices)	*
A	Up to £40,000	6/9
B	£40,001 to £52,000	7/9
C	£52,001 to £68,000	8/9
D	£68,001 to £88,000	1
E	£88,001 to £120,000	11/9
F	£120,001 to £160,000	13/9
G	£160,001 to £320,000	15/9
H	Over £320,000	18/9

* Proportion of Band D Council Tax Payable

Banding Appeals

You may be able to appeal against the banding if you have just moved to a property, if the property has been structurally altered, or if the area in which your property is situated has changed. Any queries about appeals and bandings should be made direct to the Valuation Office Agency at www.gov.uk/voa/contact.

What Do I Do if I Think I am Paying Too Much Council Tax?

If you believe your bill to be incorrect, you can write to the Council to appeal. If you still believe the decision to be wrong, you can then appeal to the Valuation Tribunal Service. Please contact the Council Tax team on 01785 619 279, who will be happy to discuss this with you.

Contact Us

If you need further information about your Council Tax bill please visit our website www.staffordbc.gov.uk/ctbooklet or call the Council Tax team on **01785 619 279**.